



Introduction

The L@titude range of fire alarm control equipment combines the very latest hardware and software to produce a control and indication system, which is powerful and sophisticated, yet simple to use and understand.

The flexibility of the L@titude platform is such that it can be re-configured to realise many other control and indication applications, with direct integration into intelligent buildings.

The L@titude platform is designed to add value to System Designers, Integrators, Service Providers and End Users/Building Owners. Developed from the ground up by Hochiki's leading design team and using some of the most advanced technology available, L@titude is designed as one of the most powerful, intelligent and technically robust fire alarm products available.

The products and services offered under the L@titude brand provide solutions to the most technically challenging applications in life safety.

The modular nature of the L@titude system allows all field wiring to be connected to a passive mother board enabling addition, re-configuration or replacement of all electronic hardware without the need to disconnect any field wiring.

This modularity also allows each panel to be customised with addressable loop detection circuits, conventional detection circuits, relay cards, additional sounder outputs or programmable I/O modules as required.

Features

- ▶ 2 to 8 loop or 2 to 16 loop versions
- ▶ 5.25 A or 10.25 A, power supply options
- ▶ 3 programmable inputs
- ▶ 5 programmable relay outputs
- ▶ Hard wired fire and fault routing inputs and outputs
- ▶ Modular electronics
- ▶ Over 4000 sub address points per panel
- ▶ Option to "invert" inputs and outputs
- ▶ Powerful, standard configuration templates
- ▶ Network up to 32 panels*
- ▶ Configurable via USB port to PC or memory stick

EN Features

- ▶ Compliant with EN54-2, EN54-4, EN54-13
- ▶ 500 mA loop current
- ▶ 4 programmable sounder circuits each rated at 2.5 A
- ▶ Up to 512 programmed Input/Output via optional plug in and serially connected expansion cards
- ▶ 2 ancillary serial ports
- ▶ Supports 15 languages

UL & FM Features

- ▶ UL Listed (Tenth Edition) and FM Approved
- ▶ 400mA loop current
- ▶ Programmable NACs; 4 Class B or 2 Class A, all with internal synchronisation
- ▶ L@ti-View Graphical PC User Interface - coming soon!

* Please speak to your Hochiki Sales representative for more information surrounding current networking capabilities.

COMPANY OVERVIEW

Established in Japan in 1918, Hochiki is a wholly independent, multinational, publicly listed group of companies with over 2000 employees working across six manufacturing plants, 38 sales offices and 14 subsidiaries.

One of the world's leading manufacturers of commercial and industrial fire detection and emergency lighting solutions, Hochiki has acquired global acceptance as the benchmark for high-integrity and long-term reliability.

Hochiki's facilities in Japan, the United States of America and Europe design and manufacture products and provide technical support suited to local standards and customer requirements.

Total commitment to meeting the needs of individual national markets has reinforced the company's global reputation, resulting in Hochiki products being installed in many prestigious sites and in over 80 countries worldwide.



STATS TAKEN FROM THE HOCHIKI CUSTOMER SERVICE SURVEY

91%

Respondents rated product quality as either 'very good' or 'excellent'

92%

Customers stated our market reputation is 'very good' or 'excellent'

88%

Customers are most likely to recommend our products



L@titude Display

L@titude utilises a full colour, 7" 800 x 480 touch screen graphical display to provide a clear, simple and intuitive user interface. 80 character zone location and 80 character device messages allow a clear, concise description of each detection device location to be configured. Resistive touch screen technology permits control functions to be available, even when wearing protective gloves.



User Access

Access to the L@titude menu and control functions is provided by a unique 6 digit pass code or by the optional enable control key switch. Up to 64 individual login accounts can be configured with different profiles and access permissions.



Powerful, Network Wide Cause & Effect

L@titude cause and effect capacity supports 5000 cause and effect entries, with up to 20000 inputs and controlling 20000 outputs across the network. The introduction of groups in L@titude allows rationalisation and simplification of the system configuration. Support for up to 5000 groups and up to 50000 devices is provided.



Zone Indicators

Up to 144 zone indicators or 48 zone indicators plus panel printer are available. L@titude supports up to 2000 detector zones and zone indicators.



Power Supply Options

L@titude is available with two power supply options, each available in 230 V or 115 V mains voltages. 5.25 A (supports up to 26 Ah batteries) and 10.25 A (supports up to 45 Ah batteries). Note: The 4 slot enclosure houses 18 Ah batteries and the 8 slot enclosure houses 33 Ah batteries.





Expansion Options

L@titude input/output cards can be fitted in spare slots within the panel.

The family includes:

- ▶ 8 way conventional detection board
- ▶ 4 way sounder output board
- ▶ 8 way volt free relay contact board
- ▶ 16 channel programmable input/output board



Backlight Control

The built in light sensor allows the display backlight to be configured to follow the ambient light levels or automatically dim after a period of inactivity.



Event Log

A 10000 entry event log records all system activity to 1 second resolution. The log is held in secure memory and is retained when power is removed from L@titude. Powerful filtering allows the log to be sorted by event type, between dates, by zone, by panel and by address. Using the Loop Explorer 2 configuration program, the event log can be downloaded and stored as a comma separated by values (csv) format.



Printer Option

A 40 character front loading thermal printer prints all events as they occur. The printer can also be used to print all/selected event log entries.

EN System Architecture



Comes as standard with:

1 Loop Card
(2 Loops per card)



With space for up to 4 Loop Cards
(each card provides 2 Loops)

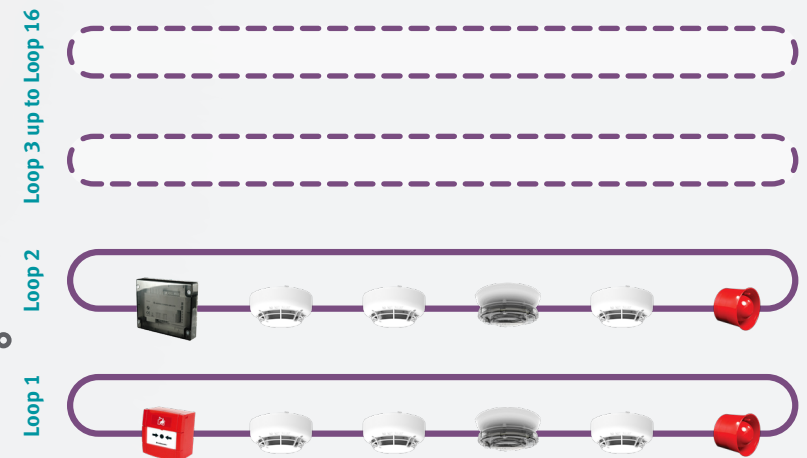
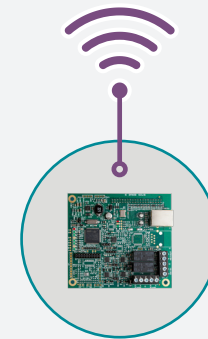
Compatible I/O Boards include:

- ▶ 16 Channel I/O
- ▶ 8 Way Relay
- ▶ 8 Way Conventional Zone
- ▶ 4 Way Sounder

Each loop is capable of hosting upto 127*¹ addresses



Network Card allows 32
L@titude Repeaters/Panels to be
added to the network.



*¹Please speak to your Hochiki representative for more information surrounding current networking capabilities *²BMS systems using LonWorks, Modbus or BACnet protocols coming soon.

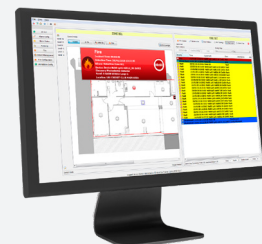
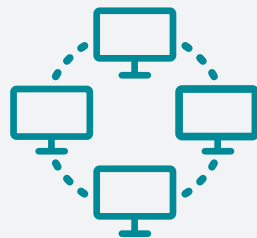


L@titude Vision Network Repeater

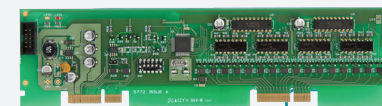
The L@titude Vision Network Repeater allows a full display and optional control of the L@titude fire alarm control panel from a small and unobtrusive local control station network repeater.

Features

- ▶ Robust, full colour, 7" 800 x 480 touch screen graphical display
- ▶ Full indication of all information displayed at the fire control panel
- ▶ Automatic display brightness adjustment
- ▶ (Silenceable) internal sounder
- ▶ Connections Via: Panel Network
- ▶ Low current, 24 VDC powered
- ▶ Slim compact construction
- ▶ Configurable functionality
- ▶ Configurable languages
- ▶ Optional Enable Key-switch.



Simple Plug-IN



L@titude Virtual Resource

VR Access

Access data from all your systems

VR Vault

Secure document vault

VR Service

Complete service management utility with autodata transfer

VR Print

Eliminates need for panel mounted printers

L@ti-View

Powerful and Sophisticated Software Solution

No situation requires a more urgent response than a fire event. On a large public site, especially during busy periods, public safety is paramount.

A powerful and sophisticated software solution, L@ti-View gives building managers complete monitoring and control over fire detection, providing a comprehensive fire risk and incident management system. Where time is of the essence, site managers can respond quickly and efficiently to a fire event. L@ti-View plays a crucial role in safeguarding people, vitally important information and property.

Features

- ▶ Supports dual screens, allowing a dedicated screen for the 2D location images and a separate screen for listing active events and system management.
- ▶ Powerful event log filtering and reporting.
- ▶ Manage the state of the fire system using a combination of graphical images and system controls.
- ▶ Full map navigation using configurable buttons or map areas.
- ▶ Perform device and zone disablements/enabements.

Media Gateway card allows connection to VR Nimbus, Vizulinx and L@ti-view*2

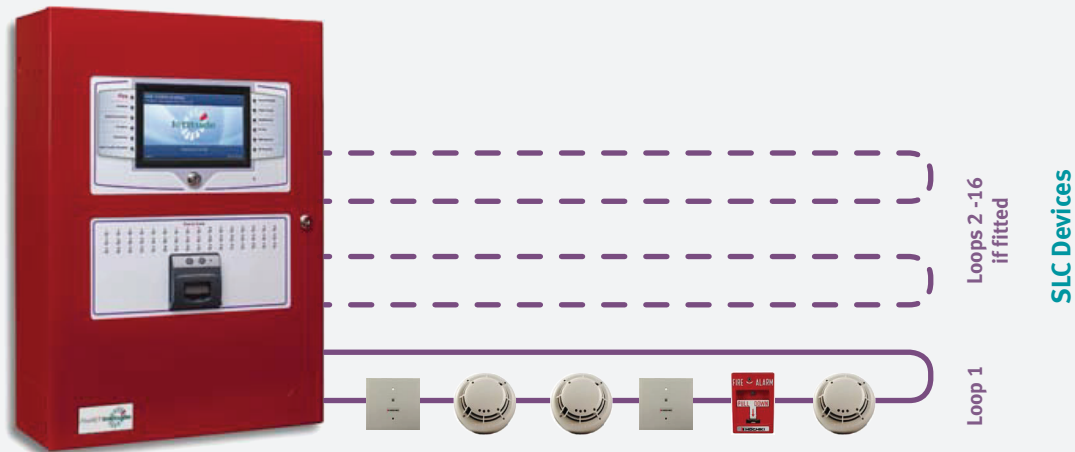
The Media Gateway Panel Module provides connectivity to monitoring centers using IP (Sur-Gard), or dial-up connectivity. The Media Gateway may also be used to meet integration application requirements.

Features

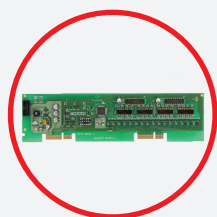
- ▶ Simple 'plug-in' connection to the L@titude Fire Alarm Control Panel technology
- ▶ Dual Line Dialler capability (SIA or Contact ID)
- ▶ IP capable (Sur-Gard Fibro)
- ▶ Programmable to report via Point or Zone
- ▶ Programmable for back-up reporting
- ▶ Report codes can be customised by user
- ▶ Standard RJ45 connection port
- ▶ Low current consumption.

UL & FM Network Schematic

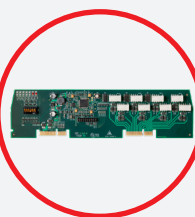
FireNET L@titude
Fire Alarm Control Panel
2 - 16 Loop Analog Addressable Control Panel



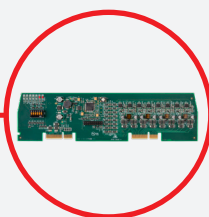
Double Aperture with Zone LED Module and Printer model shown
Standard cabinet and Deep cabinet models available



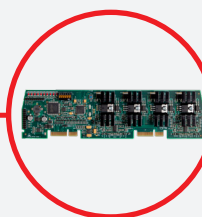
**Media Gateway
Panel Module**



**8 Channel Relay
Panel Module**



**8 Way
Conventional
Module**

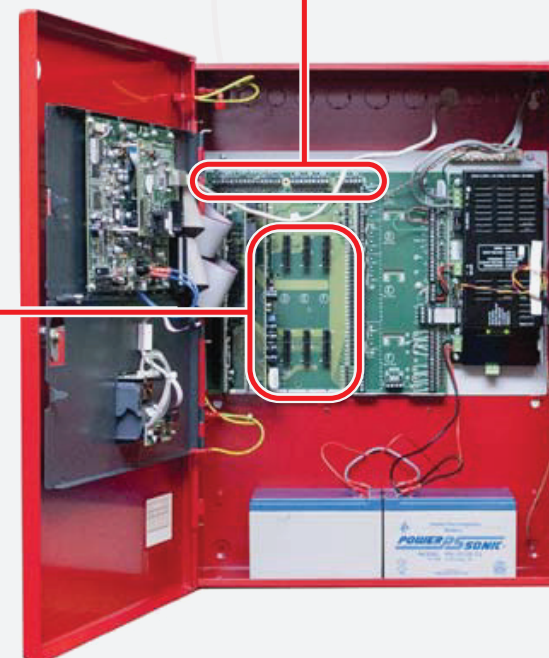


**4 Way Sounder
Board**

FireNET L@titude
Network Vision Annunciator
Configurable Fire Alarm Annunciator

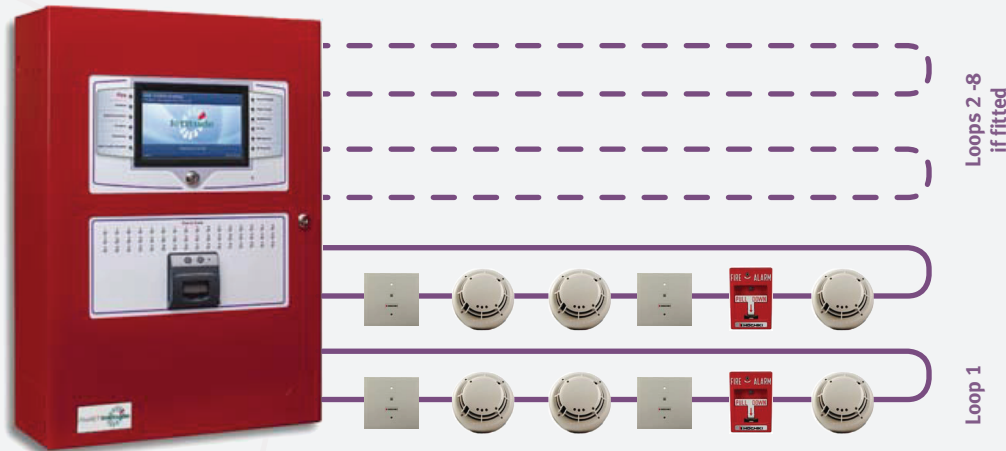


**Notification
Appliance
Circuits**



Many features are found on both EN and UL. Speak to your Hochiki representative for more information surrounding current capabilities.

Double Aperture with Zone LED
Module and Printer model shown.



FireNET L@titude Fire Alarm Control Panel

2 - 8 Loop Analog Addressable Control Panel



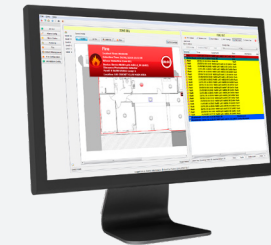
Any network segment or
combination of segments
can be connected with fiber
optic cable or copper wire.



16 Notification I/O Interface Card

The 16 Channel I/O Interface enhances the versatility of the alarm system by providing additional input and output capabilities to the panel.

Inputs or outputs can be selected for up to 16 individual channels, and are configured in the same way as devices connected to addressable loops of the panel. The 16 Channel I/O Interface can be configured to contribute or act upon cause and effect logic.



L@ti-View

Powerful and Sophisticated Software Solution

No situation requires a more urgent response than a fire event. On a large public site, especially during busy periods, public safety is paramount.

A powerful and sophisticated software solution, L@ti-View gives building managers complete monitoring and control over fire detection, providing a comprehensive fire risk and incident management system. Where time is of the essence, site managers can respond quickly and efficiently to a fire event. L@ti-View plays a crucial role in safeguarding people, vitally important information and property.

Features

- ▶ Supports dual screens, allowing a dedicated screen for the 2D location images and a separate screen for listing active events and system management.
- ▶ Powerful event log filtering and reporting.
- ▶ Manage the state of the fire system using a combination of graphical images and system controls.
- ▶ Full map navigation using configurable buttons or map areas.
- ▶ Perform device and zone disablements/enabements.

EN Panel Technical Specifications

2-8 Loop (4 Slot) Enclosure

Size Standard	- 420mm (W) x 590mm (H) x 150mm (D)
Size Deep	- 420mm (W) x 590mm (H) x 195mm (D)
Construction	- 1.5mm mild sheet steel
Cable entry	- 28 knockouts top, 18 knockouts back, 1 knockout each side
Battery Capacity	- Up to 18 Ah

2-16 Loop (8 Slot) Enclosure

Size Deep	- 540mm (W) x 720mm (H) x 212mm (D)
Construction	- 1.5mm mild sheet steel
Cable entry	- 50 knockouts top, 26 knockouts back, 1 knockout each side
Battery Capacity	- Up to 33 Ah

All Models

Finish	- Epoxy powder coated
Colour - Lid and Box	- BS 00 A 05 fine texture
Power supply voltage	- 230 VAC or 115 VAC
Power supply rating at 24 VDC	- 5.25 A (charges up to 26AH) or 10.25 A (charges up to 45AH)
Display	- Full colour 800 x 480 LCD with resistive touch screen and automatic backlight dimming
Printer	- 40 column, front loading thermal (optional)
Zone LED indicators	- Up to 3 banks of 48 (144) as standard
Software zones	- 2000

All Models

Software groups	- 5000
Event log	- 10,000 events, 1 second resolution. Filterable and printable.
Detection loops	- 2 to 16 added 2 at a time (K758 dual loop cards)
Detection loop current	- 500 milliamps each
Sounder circuits	- 4 each rated at 2.5 A, 24 VDC
Programmable auxiliary	- 24 V supply 1
Auxiliary 24V supply 1	- 24 VDC fused at 500 milliamps
Auxiliary 24V supply 2	- 24 VDC fused at 500 milliamps
Default relays	- Fault, Fire, Alarm, Programmable 1 and Programmable 2 (all re-programmable)
Programmable inputs	- 3, activated by volt free contacts
Auxiliary Serial port A	- RS232 programmable
Auxiliary Serial port B	- RS232 programmable
Ancillary I/O board serial port	- RS485 programmable
Fire Routing (IFAM) serial port	- RS485 programmable
USB host port	- USB type A
USB device port	- USB type B
Fire routing output	- Monitored
Fire routing input	- Monitored
Fault routing output	- Monitored
Fault routing input	- Monitored
Extinguisher output	- Monitored
Extinguisher input	- Monitored
Extinguisher fault input	- Monitored.

UL & FM Panel Technical Specifications

2-8 Loop (4 Slot) Enclosure

Size Standard	- 420mm (W) x 590mm (H) x 150mm (D)
Size Deep	- 420mm (W) x 590mm (H) x 195mm (D)
Construction	- 1.5mm mild sheet steel
Cable entry	- 28 knockouts top, 19 knockouts back, 1 knockout each side
Battery capacity	- Up to 28 Ah (Power Sonic PS-12280)

2-16 Loop (8 Slot) Enclosure

Size Deep	- 540mm (W) x 720mm (H) x 212mm (D)
Construction	- 1.5mm mild sheet steel
Cable entry	- 50 knockouts top, 25 knockouts back, 1 knockout each side
Battery capacity	- Up to 40 Ah (Power Sonic PS-12400)

All Models

Finish	- Epoxy powder coated
Colour - Lid and Box	- Red, Gray, or Black
	Control Plate - RAL7016
Power supply voltage	- 5.25 A (charges up to 60AH) or 10.25 A (charges up to 100AH)
Display	- Full colour 800 x 480 LCD with resistive touch screen and automatic backlight dimming
Software zones	- 2000
Software groups	- 5000
Cause and Effects	- 5000

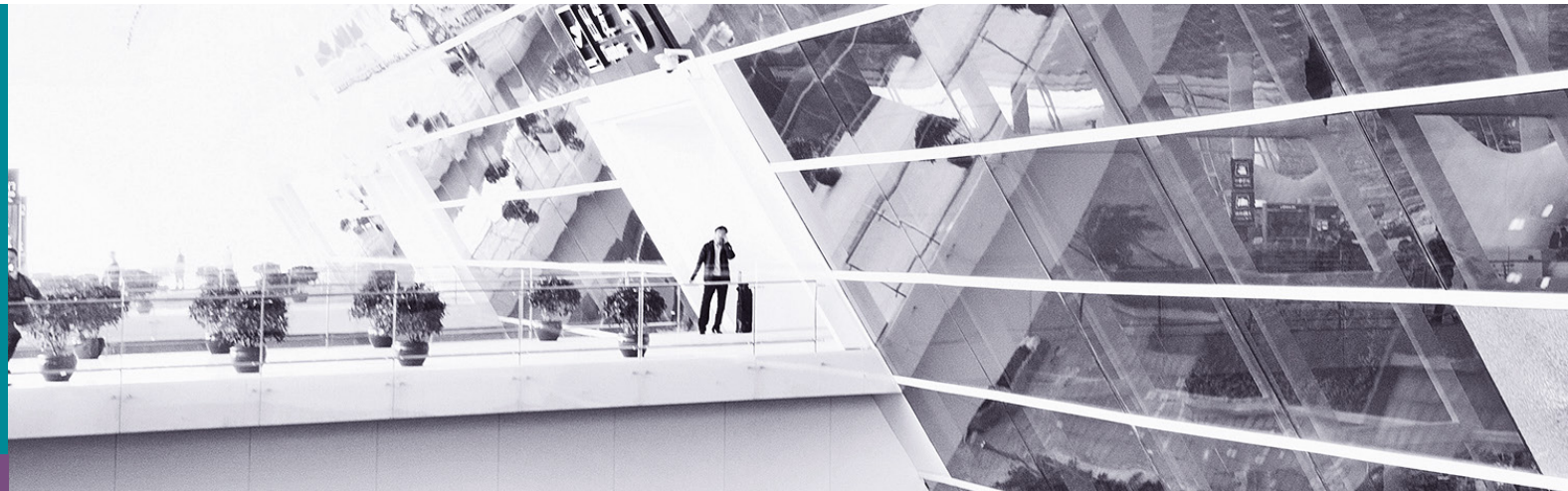
All Models

Event log	- 10,000 events, 1 second resolution. Filterable and printable.
Detection loops	- 2 to 16 added 2 at a time (S758 dual loop cards)
Detection loop current	- 400 milliamps each
Auxiliary power	- 2; each rated at 900 mA
NACs	- 4; each rated at 2.5 A. Class B or 2 Class A
Programmable relay outputs	- 5; 30 VDC 1 AMP
Programmable inputs	- 3; designed to be activated by voltage-free contacts
Network Connections	- Optional network card provides communication for networking 127 fire control panels
NAC Synchronization	- Internal Supprt of System Sensor, Wheelock, Gentex and Amseco protocols
Primer (optional)	- 40 column, front-loading thermal
Zone LED indicators (optional)	- Up to 3 banks of 48 (144) as standard.
Auxiliary Serial port A	- RS232 programmable
Auxiliary Serial port B	- RS232 programmable
Ancillary I/O board serial port	- RS485 programmable
Fire Routing (IFAM) serial port	- RS485 programmable
USB host port	- USB type A
USB device port	- USB type B
Fire routing output	- Monitored
Fire routing input	- Monitored
Fault routing output	- Monitored
Fault routing input	- Monitored
Extinguisher output	- Monitored
Extinguisher input	- Monitored
Extinguisher fault input	- Monitored.

HOCHIKI EUROPE (UK) LIMITED

Grosvenor Road, Gillingham Business Park,
Gillingham, Kent, ME8 0SA, United Kingdom
Telephone: +44 (0)1634 260133
Facsimile: +44 (0)1634 260132
info@hochikieurope.com
www.hochikieurope.com/latitude

2-3-0-2151/ISS10/SEP21



Distributed by:



Quality Management Systems
Certificate No. 164 QMS
Assessed to ISO 9001

Environmental Management Systems
Certificate No. 164 EMS
Assessed to ISO 14001



Business Member



Fire Industry Association



ENITI AD DEFENDERE
Affiliate Member



Your Safety, Our Technology